

# 7102 Ambassador Road

Rutherford Business Park | Woodlawn, MD



**Address:** 7102 Ambassador Road  
Woodlawn, MD

**Building Size:** 8,794 SF

**Available SF:** Suite 100: 4,402 RSF

**Rental Rate:** \$19.50/SF

**Parking Ratio:** 4.5 / 1,000 SF; Free & Unreserved

**Location & Amenities:**

- SSA & CMMS Headquarters less than 1 mile away
- Convenient to Routes I-695, I-95, I-795, I-70, US Route 40 & I-83
- Complete range of business services available nearby including restaurants, daycare, mall and banks
- Excellent visibility from I-695
- Park-like setting with attractive landscaping and desirable glass line
- Newly renovated common areas

**Telecom:** Verizon DSL & Comcast

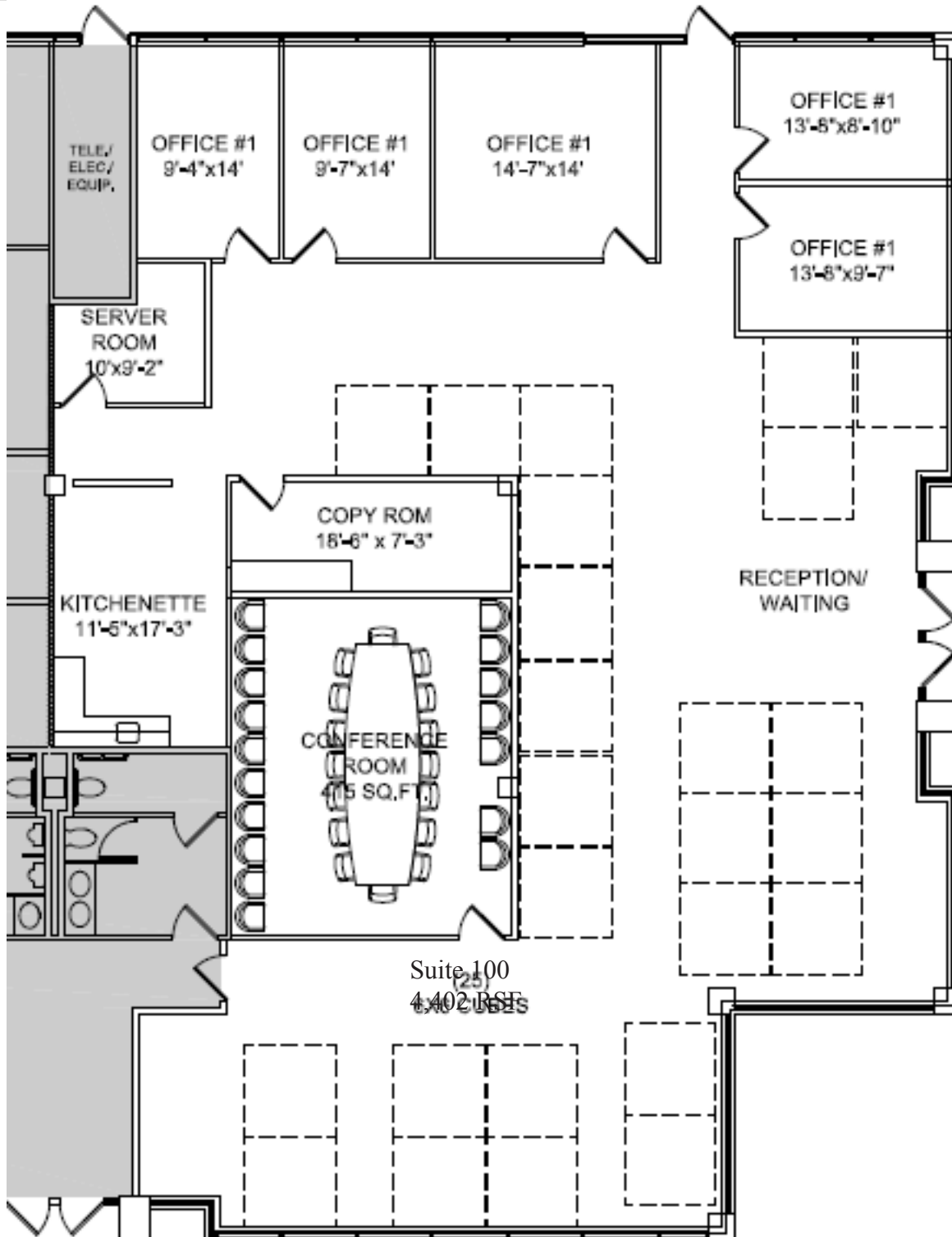


FOR MORE INFORMATION CONTACT Alan Grabush | Principal | T 443.725.9000 x114 | [alang@thecsgroup.com](mailto:alang@thecsgroup.com)

[www.csgpartnersllc.com](http://www.csgpartnersllc.com)

# 7102 Ambassador Road

Rutherford Business Park | Woodlawn, MD



Suite 100-4,402 RSF

FOR MORE INFORMATION CONTACT Alan C. Grabush | Principal | T 443.725.9000 x114 | [alang@thecsgroup.com](mailto:alang@thecsgroup.com)